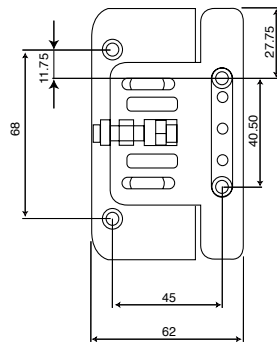
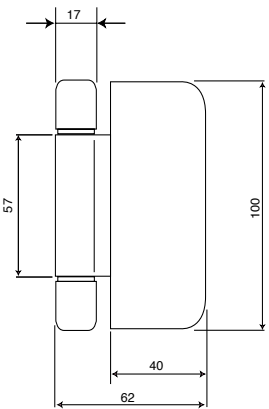
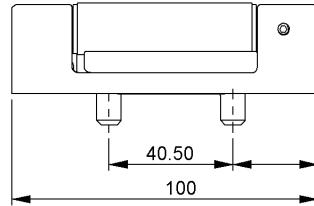
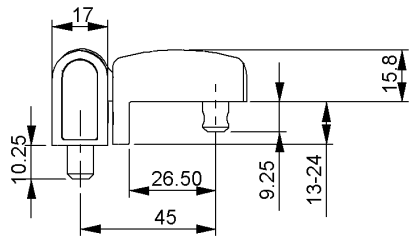


Technical Data

Type	Flag / butt
Lateral Adjustment (mm)	+/- 4
Height Adjustment (mm)	+ 4
Compression Adjustment (mm)	+/- 1
Suits Over-rebate (mm)	14 to 25
Maximum Sash Weight (kg)	80 (2 hinges)
Finishes	Chrome PVD, gold PVD, white, brown, light oak
Material Specification:	
Frame & Sash Parts	Zinc die cast Z13 to BS1004
Powder Coated	Syntha pulvin plus
Pin	Mild steel
Box Quantity	10

Technical Drawings



Evolution Hinge

The Evolution combines the adjustment and strength of a flag hinge with the anti-lift properties and subtle sight lines of a butt hinge to provide a hinge with a wealth of features.

- High security hinge - successfully tested to PAS 24-1 without the need for additional hinge protectors
- Stainless steel hinge pin
- Screw fixings secure through the over-rebate and fix into bosses
- Adjustable to ensure optimal weather tightness and installation
- Lateral adjustment +/-4mm
- Vertical adjustment +4mm
- Adjustment can be carried out without dis-mounting door leaf
- 8mm diameter bosses provide additional stability
- Suitable for sash over-rebates sizes from 14mm to 25mm
- Infill pieces available for use on ovulo and chamfered profiles
- Available in a range of attractive finishes



Part Numbers

Description	Over-rebate (mm)	Chrome PVD	Gold PVD	White	Brown	Light Oak
Evolution Hinge	15 or 18	024307	024303	024302	024301	024304
Evolution Hinge	16 or 17	024317	024313	024312	024311	024314
Evolution Hinge	19 or 22	024327	024323	024322	024321	024324
Evolution Hinge	20 or 21	024337	024333	024332	024331	024334

Guarantees & Accreditations

Mechanical Guarantee	5 years
Labour Guarantee	2 years

to place your order simply call our sales team direct on 01327 312 400